

The background image shows the interior of a stone castle. The walls are made of dark, weathered stone and feature several arched windows. In the center of the courtyard, there is a large, octagonal stone structure with a dark, circular top, possibly a well or a decorative feature. The ground is covered in green grass.

# Research Upgrades at Historic Environment Scotland

Aurélie Turmel & Lisa Brown



HISTORIC  
ENVIRONMENT  
SCOTLAND

ÀRAINNEACHD  
EACHDRAIDHEIL  
ALBA



Arts and  
Humanities  
Research Council

# HISTORIC ENVIRONMENT SCOTLAND IN NUMBERS



EMPLOYEES & VOLUNTEERS



PROPERTIES IN OUR CARE



SCHEDULED MONUMENTS



LARGEST SKILLS TRAINER IN SCOTLAND



MANUSCRIPTS PHOTOGRAPHS & DRAWINGS

RELATING TO SCOTLAND'S ARCHAEOLOGY, BUILDINGS, INDUSTRIAL AND MARITIME HERITAGE



OBJECTS IN OUR COLLECTIONS



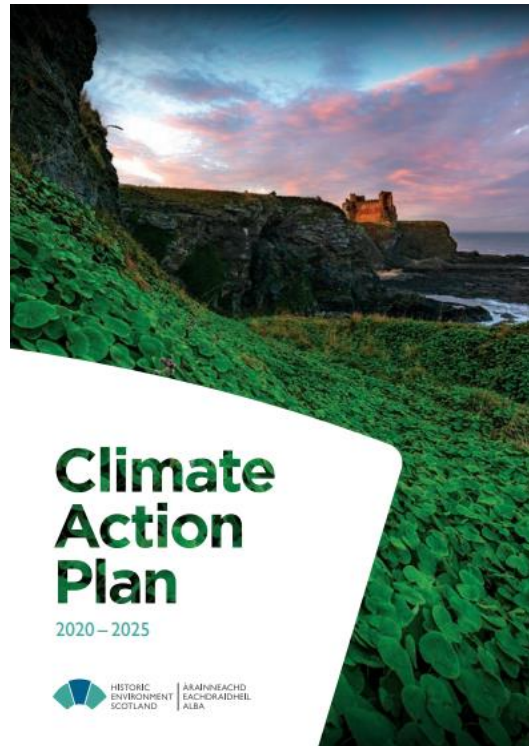
£14.5M GRANTS AND FUNDING



HISTORIC ENVIRONMENT SCOTLAND

ÀRAINNEACHD EACHDRAIDHEIL ALBA

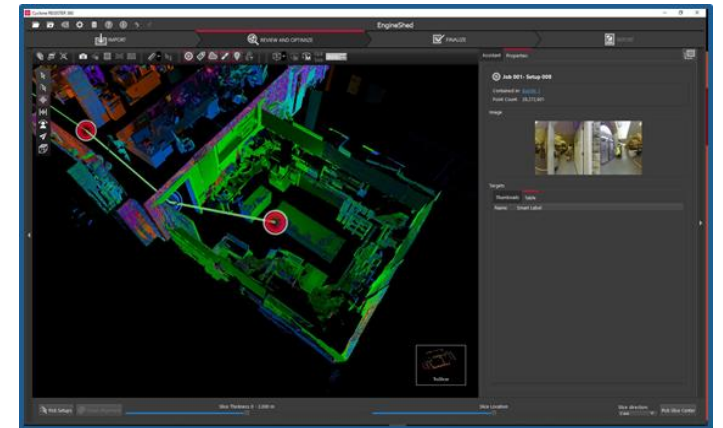
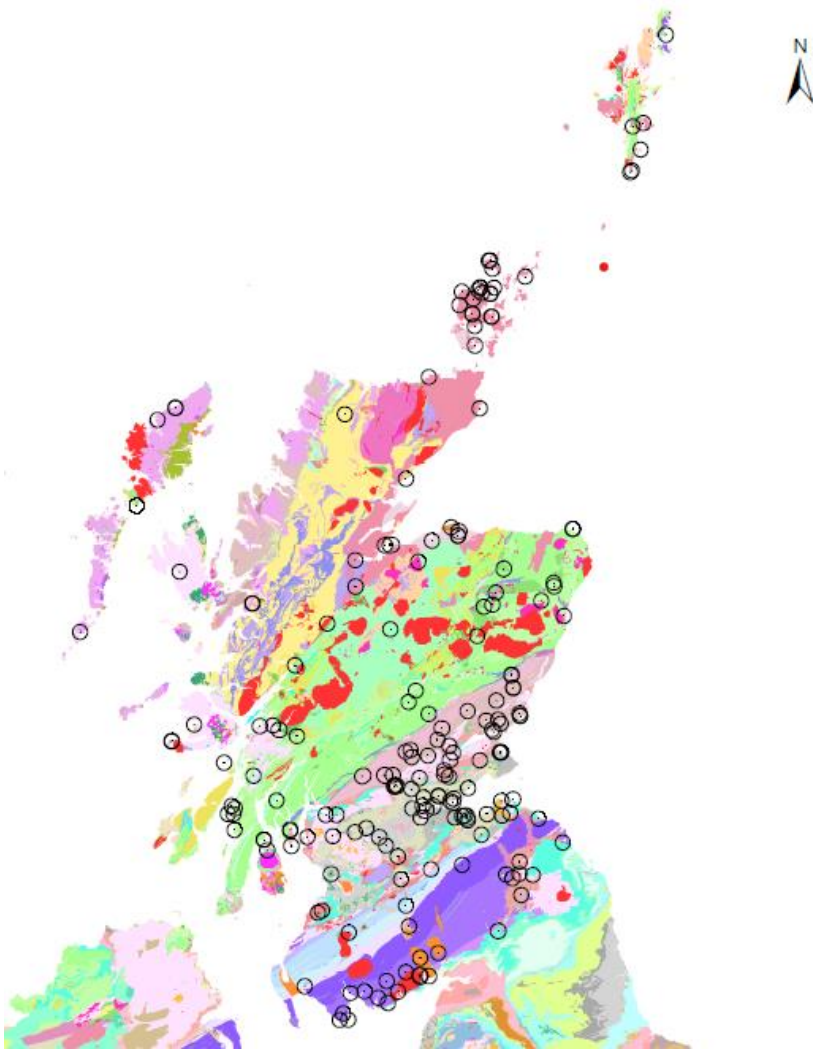
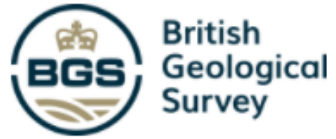
Through enhancing knowledge and understanding of our cultural heritage, we aim to protect and conserve it, both now and for future generations



## 12 equipment funded over 4 collaborating team

- Malvern Panalytical Aeris XRD
- Bruker Tracer 5g pXRF
- Rigsters Arago photogrammetry system
- Leica Geosystems RTC 360 laser scanner
- Leica DM2700
- Leica M80
- Leica Geosystems GNSS unit
- Photogrammetry kit
- Apollo camera
- Martice UAV with hyperspectral imager and laser scanner
- Reality capture software
- Konica Minolta chromameter CR-410

# Materials & Climate Change Survey



PhD Glasgow University: Clay-Rich Sandstone

PhD Stirling University: *Sandstone Heritage in a Climate Change(d) Future: Weathering of Torridonian and Devonian building stone and its implications for conservation*



# Eternal Connections

## Public Engagement Funding Call

