

HERITAGE HUB

Aurélie Turmel – Heritage science manager



HISTORIC
ENVIRONMENT
SCOTLAND

ÀRAINNEACHD
EACHDRAIDHEIL
ALBA

HES VISION

Scotland's historic environment is cherished, understood, shared and enjoyed with pride, by everyone.



HISTORIC
ENVIRONMENT
SCOTLAND

ÀRAINNEACHD
EACHDRAIDHEIL
ALBA

OUR PRIORITIES



The historic environment:

1. makes a **real difference** to **people's lives**
2. is **looked after, protected** and **managed** for the generations to come
3. makes a **broader contribution** to the **economy** of Scotland and its people
4. inspires a **creative** and **vibrant Scotland**
5. is **cared for** and **championed** by a **high-performing organisation**



HISTORIC
ENVIRONMENT
SCOTLAND

ÀRAINNEACHD
EACHDRAIDHEIL
ALBA

THAT MEANS...

We need to be able to tell people what we know about Scotland's historic places:

- What is it?
- Where is it?
- How old is it?
- What does it look like?
- What happened there?
- Who is associated with it?
- What about archives and objects?
- What is the context? (themes, social history etc.)



Without that, how can people understand their heritage?

How can they make the best decisions about it?

How can we expect people to care about it?

LOTS OF DATA!

We have:

- Over 100 public websites
- An Archive of over 5m items
- 40000 Objects Collection
- 336 Properties in Care
- Educational material
- Unpublished electronic data
- Unpublished physical records



If we were asked for all our information
on a given site, subject or person
we couldn't do it.

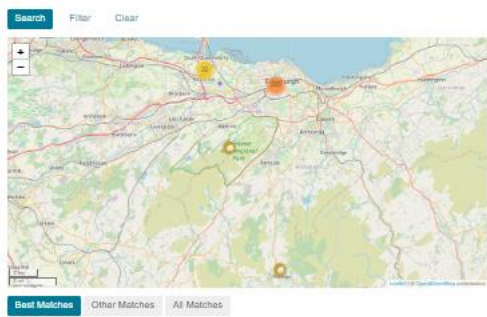
Home Search Downloads

Search

edinburgh castle

It's important that you read our [guidance](#) about how to search for designations before beginning. you will also find our [designations search user guide](#) here. For listed buildings we recommend that you carry out both a record and a [map search](#) (opens main website). Alternatively, you can download a [complete list of all designations](#).

Tip: To search for live (in progress), scheduled monument consent and designations cases click "Filter" below then choose "I'm looking for" Decisions, select the appropriate Type and Subtype (or leave as Any), then "Submit" in progress.



Please note that map results show only the first 500 results and should be used for general site location only. For accurate [3D](#) data, including polygons, please refer to the relevant [download](#).

- 1053 results
- EDINBURGH CASTLE, BATTERIES, INCLUDING ANGEL, JOHN'S FORT, WALL, HALF-MOON, AND WESTERN BATTERIES. 1.000000
 - EDINBURGH CASTLE, SCOTTISH NATIONAL WAR MUSEUM. 1.000000
 - EDINBURGH CASTLE, UNITED NATIONS WAR MUSEUM. 1.000000
 - EDINBURGH CASTLE, PALACE BLOCK. 1.000000
 - EDINBURGH CASTLE, VAULTS. 1.000000
 - Statue of Earl Philip, Hospital Square, Edinburgh Castle, Edinburgh. 1.000000
 - Statue of York Station, Edinburgh Castle Esplanade, Edinburgh. 1.000000
 - Monument by Colonel Macdonald, Edinburgh Castle Esplanade, Edinburgh. 1.000000
 - Two RB Telegraphic Kiosks, Lower Ward, Edinburgh Castle, Edinburgh. 1.000000

Items (17670)

Images (627) Sites (450) Collections (17870)

Your Selection

Revised Edinburgh Castle Index

Filter

Category: All

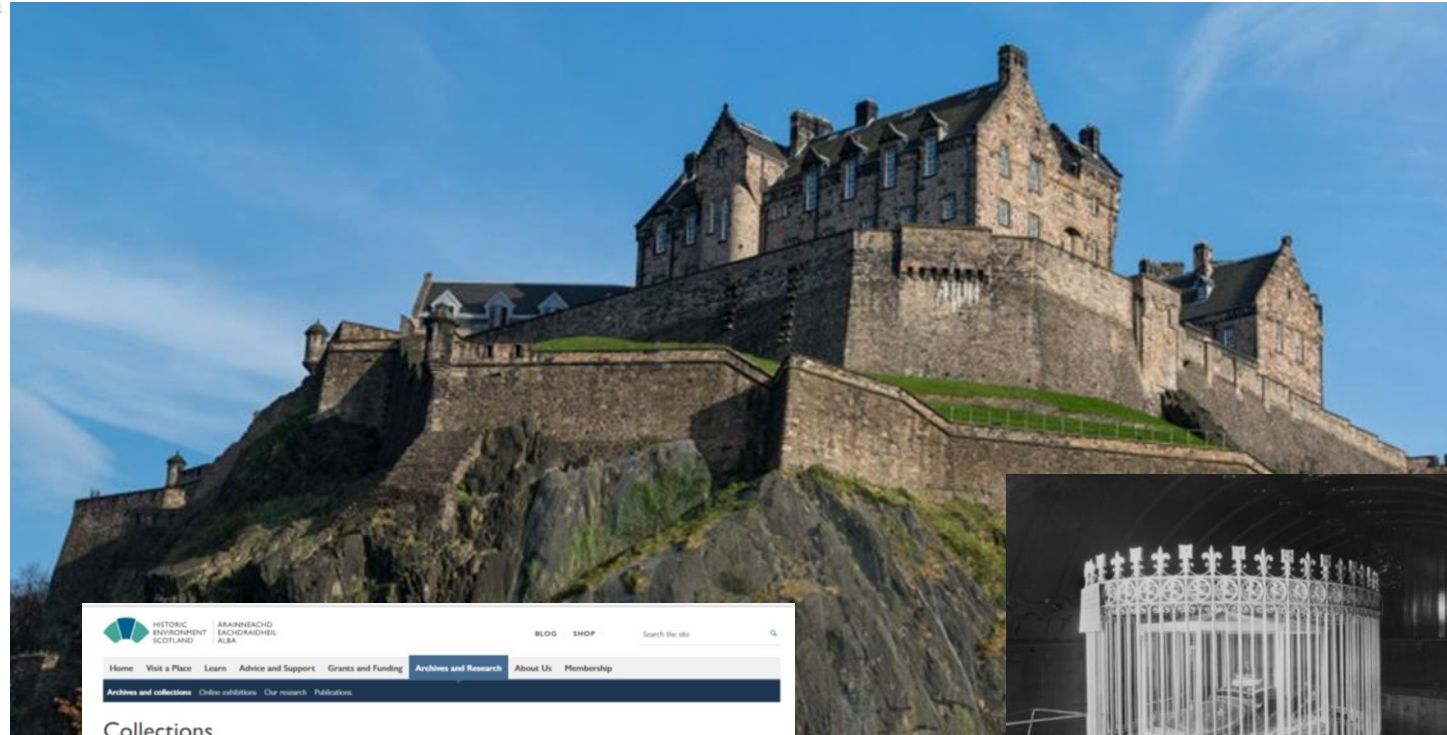
Level: All

Collection: All

Save Search

Log in to save your search

Preview	Category	Catalogue Number	Collection	Title	Date	Level	Options
	Photographs and Off-line Digital Images	A 44105			1924	Item Level	<input type="checkbox"/>
	Prints and Drawings	DC 14983	CO	Copy of "Plans of elevation of the Barracks at Corston" from copy held in Map Room, National Library of Scotland, Edinburgh)	1990	Item Level	<input type="checkbox"/>
	Photographs and Off-line Digital Images	B 83551	NC	Newsletters from the "Sunday Mail/Discover Scotland Magazine"	1990	Item Level	<input type="checkbox"/>
	Prints and Drawings	DC 22822		Copy of "Elevation: Lochee Road" Acc. No. 1954/5 Permission to reproduce, Covell Matthews Partnership, Scotland, 5 Castle Terrace, Edinburgh		Item Level	<input type="checkbox"/>
	Photographs and Off-line Digital Images	WL 1773	FO	Oblique aerial view of Edinburgh, Newby Castle.		Item Level	<input type="checkbox"/>



Collections

We care for over 38,000 objects, including many of Scotland's most culturally significant objects. This large and diverse collection provides a key source of evidence for understanding and appreciating Scotland's history and heritage.

Search by object, people or place

Filters

Home Search Stuff Resources About News Contribute Shop

Records 1 to 16 from 4806

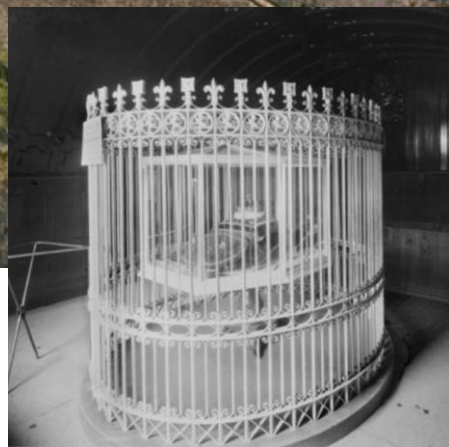
1 2 3 4 5 6 7 8 9 10 11 12 >> 301

Search Results: edinburgh castle

Stacks

Historic Environment Scotland Images (6658)

Pathfinders (12)



Publications

Browse our sorted publications, ranging from visitor guides and coffee table books to conservation guidance leaflets and academic reference reports.

To find and download historic research publications – Search Canmore

Refine results

edinburgh castle

- AUDIENCE
 - Conservation and Heritage Enthusiasts (19)
 - Researchers (6)
 - Visitors (6)
 - Educators (5)
 - Members (5)
 - Planners and Owners (4)
 - Families (3)
 - Children (3)
 - Corporate Interest Users (3)
 - Business to Business (Commercial Interest) (3)
- PUBLICATION TYPE
 - General Interest (7)
 - Children's Quizzes (6)
 - Book (General) (6)
 - Walking Booklets (5)
 - Official Seminar Guide (1)
 - Corporate (1)
 - Statement of Significance (1)
 - World Heritage Documentation (1)
 - Expert consultation (1)
 - Consultation (1)
 - Educator (1)
 - Teaching and Teacher Resource (1)
 - Heremork Hölper (1)
 - Technical Advice & Guidance (1)
 - Case Study (1)
 - Refurbishment Case Studies (1)
 - Managing Change Guidance (1)
 - Short Guide (1)
 - Research (1)
 - Edinburgh Castle Research Reports (1)
 - Research and Study Reports (1)
 - Technical Paper (1)
 - Book (Research) (1)
 - Water Information (1)

Edinburgh Castle Names (Edinburgh Castle Names)

Investigating Edinburgh Castle

Edinburgh Castle Wedding Brochure

Edinburgh Castle - Statements of Significance

Edinburgh Castle Explorer Quiz

Edinburgh Castle Visitor Letter

📺 LIVE | Over 36 of our staffed sites have now reopened and we are delighted to welcome you back. We recommend booking in advance to guarantee entry. Don't see more and book now

Dictionary of Scottish Architects 1660-1980

Home | The Project | Essay Themes | Architect Search | Building Search

Search for a Building or Design

Hover the mouse cursor over the question marks for tips:

Where is the building located?

Street:

Town/district:

Island:

City or County:

Country:

What is the building's name or type

Name:

Type:

Who has been involved?

Architect surname:

Client surname:

Clear form Search!

Your Query Results

Here is a summary of matching entries. Click on the name of any item to obtain full details in a pop-up window.

Name (alternative names in parentheses)

- Edinburgh Castle
- Edinburgh Castle Barrack Block (Edinburgh Castle, North Barracks)
- Edinburgh Castle Esplanade, 78th Highlanders Memorial
- Edinburgh Castle Esplanade, Ensign Ewart Memorial
- Edinburgh Castle, Argyle Tower and portcullis gate
- Edinburgh Castle, Bruce and Wallace Memorial
- Edinburgh Castle, Cistern
- Edinburgh Castle, Earl of Moray monument
- Edinburgh Castle, gatehouse
- Edinburgh Castle, King's Lodgings
- Edinburgh Castle, Kirkcaldy of Grange monument
- Edinburgh Castle, Magazines and Ordnance Store (Military Hospital, National War Museum)
- Edinburgh Castle, Mary of Guise monument (Edinburgh Castle, Mary of Lorraine monument)
- Edinburgh Castle, officers' quarters at Mills Mount
- Edinburgh Castle, Parliament Hall
- Edinburgh Castle, Scottish National War Memorial
- Edinburgh Castle, St Margaret's Chapel (Garrison Church)
- Edinburgh Castle, United Services Museum
- Edinburgh Castle, Visitor Centre

© 2016, Dictionary of Scottish Architects

HERITAGE HUB VISION



Create the place to go to
for Scotland's Heritage

SCOPE FOR HERITAGE HUB

IN - SCOPE

Published

Canmore

Scran

Portal

HES Collections

Buildings at Risk Register

Dictionary of Scottish
Architects

Historic Land Use
Assessment

The Castles Register

Unpublished

Research

Scientific data

Plaques

OUT - SCOPE

Partnership sites:

Britain From Above

Scotland's Places

PastMap...

Visitor Sites:

Stirling Castle

Edinburgh Castle...

HES Corporate website (mostly)

Engine Shed

NCAP



HISTORIC
ENVIRONMENT
SCOTLAND

ÀRAINNEACHD
EACHDRAIDHEIL
ALBA

SCIENTIFIC DATA

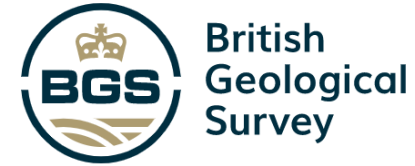
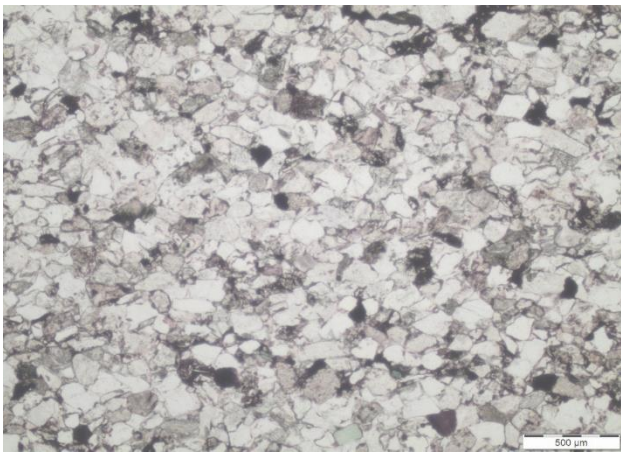
aDNA



Radiocarbon



SCIENTIFIC DATA



Welcome to the Building Stone Database for Scotland

Search for Building Stones, Quarries, Built Sites and Samples

Use our to search by location

... OR ...

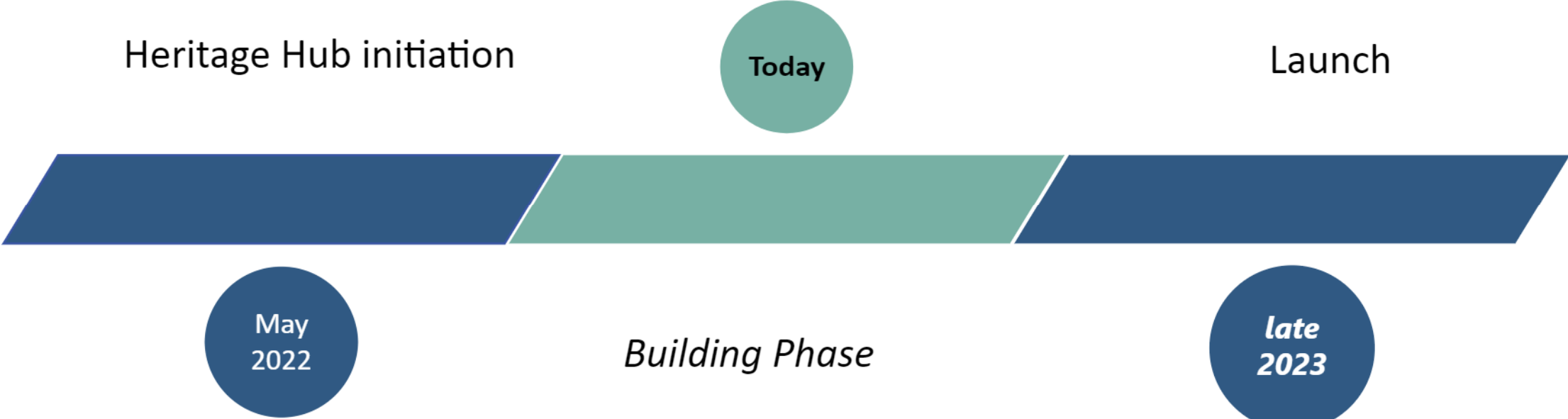
Select a theme and/or enter a keyword or phrase

All themes Building Stones Built Sites Quarries Samples

MANY CHALLENGES

- Many internal and external stakeholders
- Communication and involvement has been a high priority
- Many user groups across the existing websites
- Extensive and ongoing user research
- Many locations where data is held
- Partial consolidation of where information is held – focusing on core technologies
- Many names in the databases for the same place or person
- Identifying the connections between the data elements & establish a unified search
- Many standards in use: heritage, library, archive, museum & period
- Going back to Dublin Core to find commonality

TIMELINE



BEYOND LAUNCH



THANKS

heritagehub@HES.scot

historicenvironment.scot/user-testing

aurelie.turmel@hes.scot