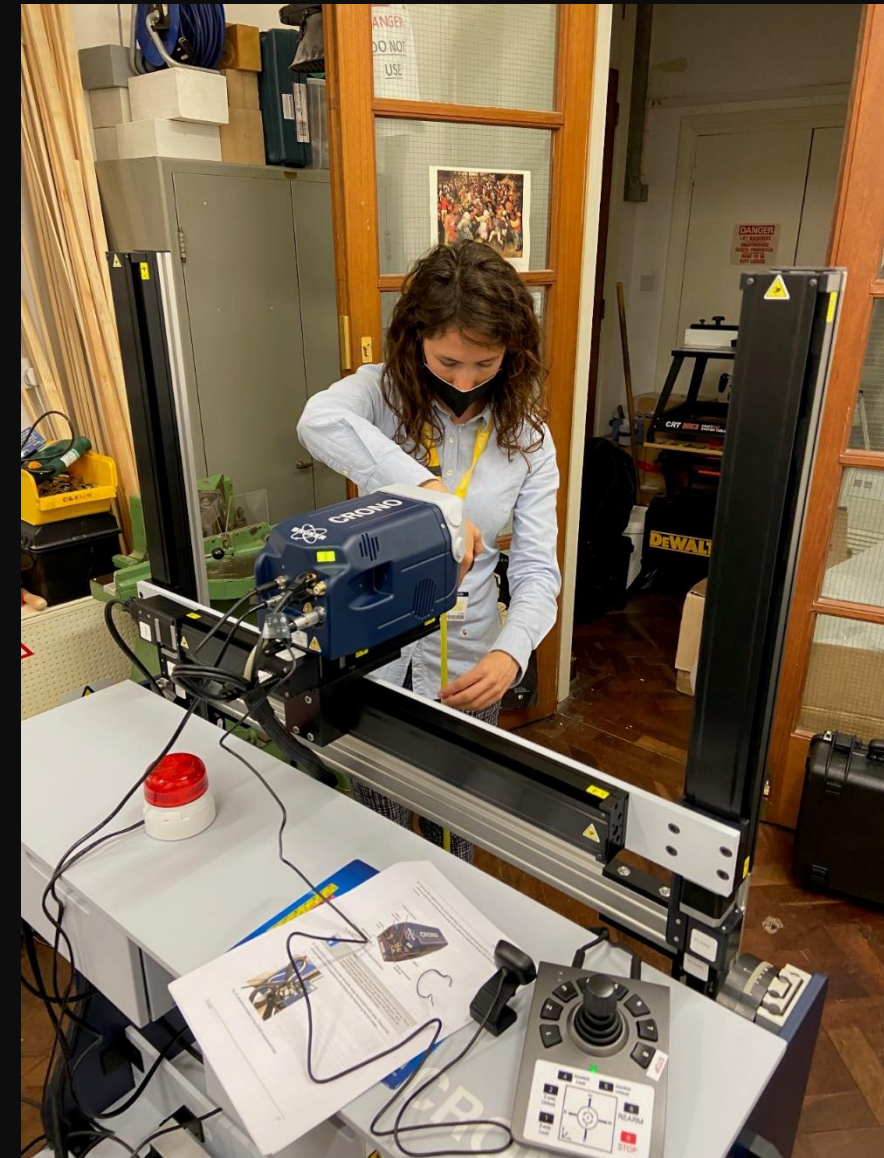


The CapCo experience – Oxford

- GLAMTech – Technologies for Gardens Libraries and Museums
- Oxford University's Museums (the Ashmolean Museum, Pitt Rivers Museum, Museum of Natural History and History of Science Museum), the Bodleian Library, the University Botanic Garden and Arboretum. Plus Research Laboratory for Archaeology and the History of Art and external partners.
- £908K on upgraded and replacement equipment
- Award letter 18th February.
- T&C - all equipment be delivered by 31st March?
- Err..... YES!
- andGO!



EQUIPMENT DETAILS	SUPPLIER	MODEL
IRR camera,	Atik Cameras Ltd	Opus Apollo
Reflectance Transformation Imaging (RTI) Dome, (Dome Reflectance Transformation Imaging System)	ECS Partners Ltd	
3D Digital Video Microscope and arm,	Keyence	Keyence VHX 7000 & articulate arm
X-Radiography generators (150 and 370Kv),	Scanna	XR150 150kv & XRS-4 370kv
Scanning XRF (Crono),	Blue Scientific Ltd	Crono XRF
Combined XRF/XRD (Hydra),	Blue Scientific Ltd	Hydra XRF/XRD
Fuji GFX System (x2) cameras and lenses,	Wex Photography	GFX system
Software for XRD,	ICDD and Malvern Panalytical	
Stereo Microscope, computer and cameras, Dell laptop	Leica	Leica M80 stereo microscope
Structured Light Scanner including Artec EVA Scanner and Artec Space Spider Scanner,	Central Scanning Ltd	Artec EVA and Artec Space Spider
Benchtop EDXRF,	Thermo Fisher	ARL Quant'X
Benchtop ESEM,	Hitachi	Hitachi TM4000Plus
Petrological/Metallographic Microscope,	Olympus	Olympus BX3M
Balance vibration table,	Cole-Parmer	Speirs Robertson AMD-SM-90x75
Sample cut-off saw,	Spectrographic Ltd	Presi Mecatome T202
Desiccator Cabinet,	Thermo Fisher/ Life Technologies Ltd	DESCTR CAB ACRY;12X12X12 IN.



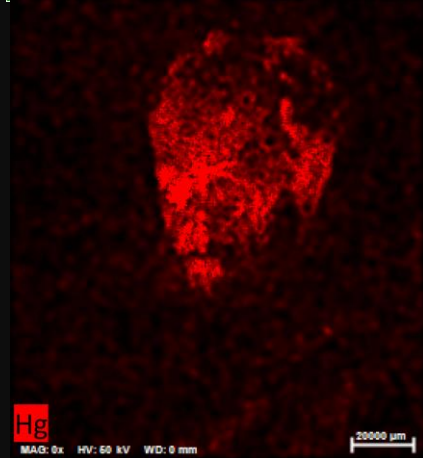
Challenges

- TIME: purchasing; commissioning; COVID
- PEOPLE: planning for a possible greater demand than before
- FUNDING: an opportunity to develop a new funding model based on greater use
- Creating a longer term sustainable plan to include further replacement and upgrades in future

Impacts and benefits

- **Research opportunities:** raising the status of this area of research, ERC analytical project, MA dissertation, DPhil, successful Leverhulme bid; V&A; external requests to collaborate; early career research
- **New collaborations:** across GLAM; with RLAHA; external
- **New level of 'normal':** upgraded equipment giving better results
- **Aligning analysis with collections needs:** portability; non destructive
- **Saving time and money:** pre-scanning, mapping rather than spot analysis, generally much faster; user training is faster
- **Public interest and accessibility:** mapping and imaging, helping to engage the public

Revisiting techniques with new technology XRF, IRR



Crono scanning XRF



Head of a Bearded Man.

'Rembrandt? Cooperative Technical Examinations of Rembrandt's "Tronies"' Staedl museum online conference 22/01/22.



Infrared using adapted SLR camera



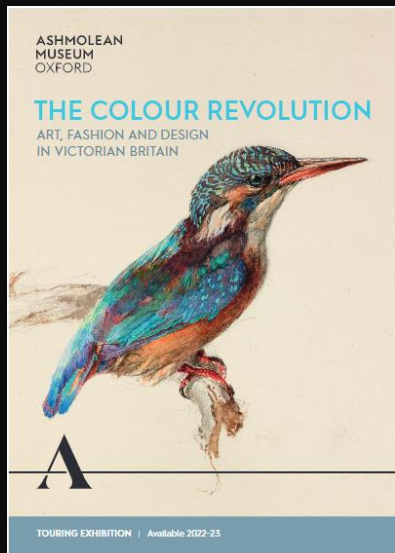
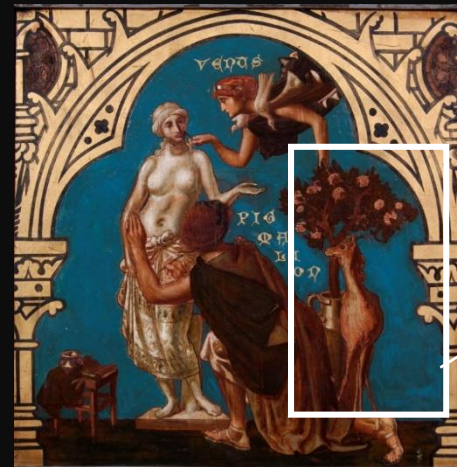
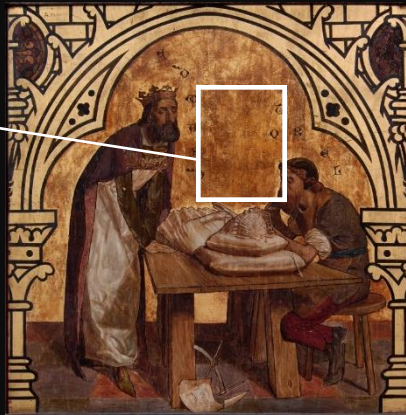
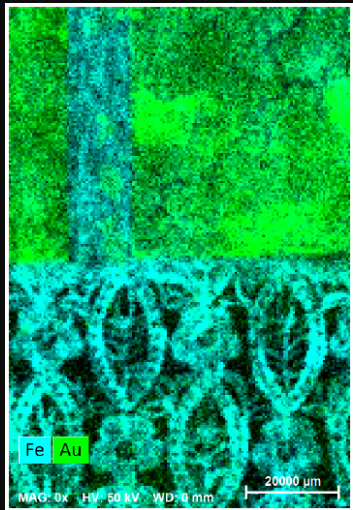
New IRR camera image

Infrared imaging



- Detail of *new* IRR image

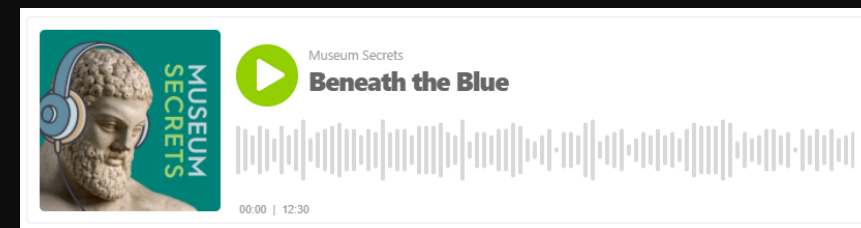
Delivering a major European Research Council project



William Burgess
Great Bookcase



Publications



Podcasts

Major exhibition 2023