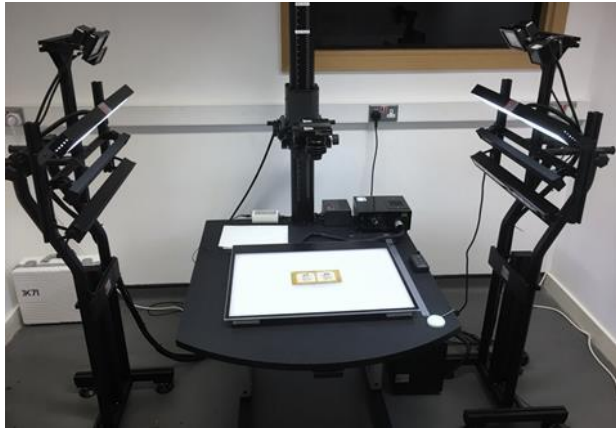
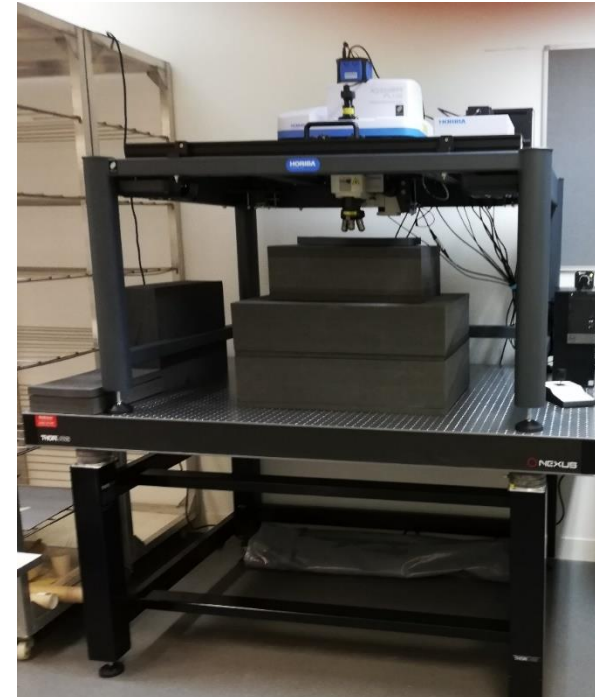


Our Analytical Capacity



- **Multispectral imaging system (MSI)**
- **Raman Spectrometer/confocal microscope (Raman)**
- Portable X-Ray Fluorescence Spectroscopy (XRF)
- Portable Fourier Transform Infrared Spectroscopy (FTIR)
 - Diffuse Reflectance (DRIFTS)
 - Specular Reflectance
 - Attenuated Total Reflectance (ATR)
- Portable VIS-NIR Fibre-Optic Reflectance Spectroscopy (FORS)
- Portable Micro-Fading Tester (MFT)
- Colour and gloss meters
- Microscopes: optical and digital (Dino Lite)
- Environmental chamber for accelerated ageing experiments (T, RH)



AI for DIGILAB: A New Concept in Digital Infrastructure for Heritage Materials Research (AHRC)

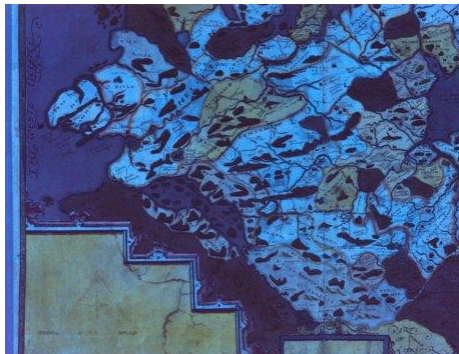
From Lima to Canton and Beyond: An AI-aided heritage materials research platform for studying globalisation through art (AHRC)

Role: Lucia Pereira-Pardo, Co-Investigator

Feb 2020 – Jan 2022

Partners:

- Nottingham Trent University
- Getty Conservation Institute
- Yale University Institute for the Preservation of Cultural Heritage
- University of Southern Maine
- The National Gallery, London



Feb 2021 – Feb 2024

Partners:

- Nottingham Trent University
- Indiana University
- Museum of International Folk Art
- Getty Conservation Institute
- Royal Horticultural Society
- Smithsonian Institution
- Royal Geographical Society
- The Library of Congress
- Royal Botanic Gardens Kew



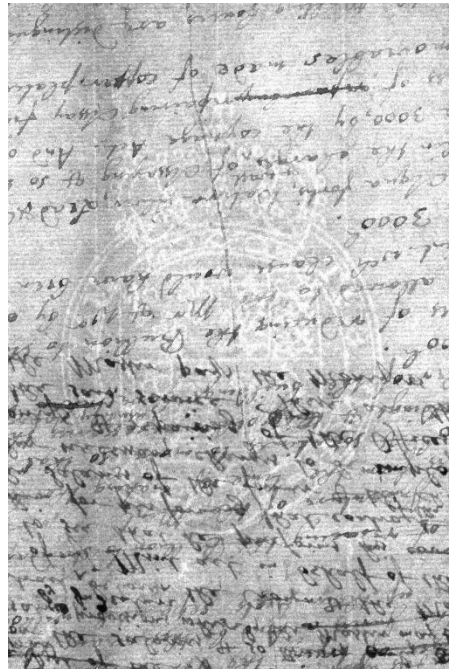
Digital approaches to the capture and analysis of watermarks using the manuscripts of Isaac Newton as a test case (AHRC)

Role: Pedro Maximo Rocha, Researcher

Feb 2021 – Aug 2023

Partners:

- University of Cambridge
 - Dept of History
 - University of Cambridge Library
 - King's College
- University of Indiana
- École Nationale des Chartes & École des Ponts ParisTech
- Huntington Library
- Science History Institute



Capturing the Materiality of the Prize Papers. A set of 19th century textile samples from Canton and Batavia as a case study (CapCo - AHRC)

Role: Lucia Pereira-Pardo, Principal Investigator

March 2022 – August 2022

Partners:

- Nottingham Trent University
- University of Milan
- V&A Museum
- TNA Education & Outreach, Collections Expertise & Engagement, Events & Exhibitions



Advisory board includes:

- University of Glasgow
- Shanghai University

